

For a straight shoulder style...

you can use sleeves from a pattern like this.



1
V8743

For a drop shoulder style...

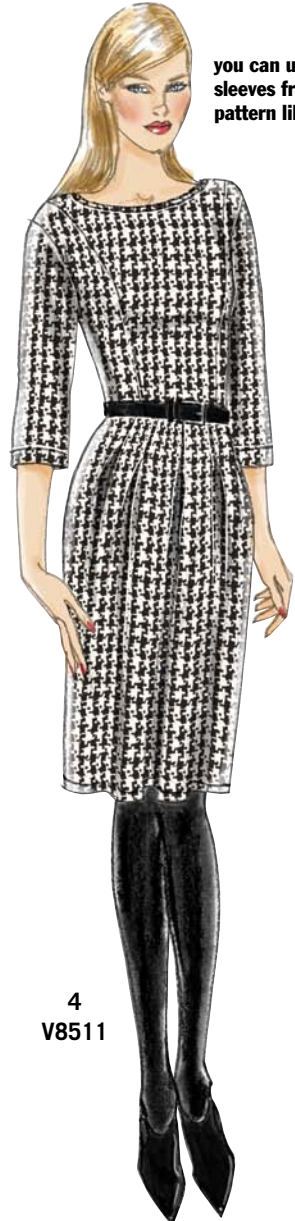
you can use sleeves from a pattern like this.



2
V8532



3
V8724



4
V8511

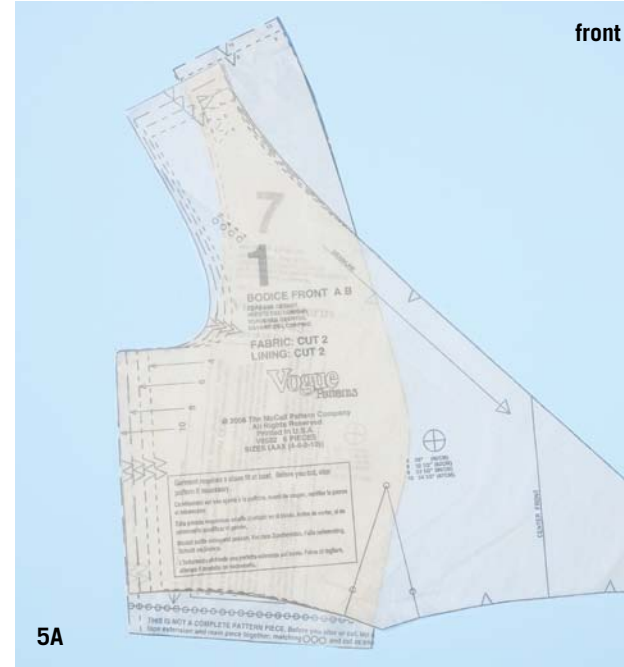
How to add sleeves to a sleeveless garment

Is there a dress or top pattern that you'd love to make BUT it doesn't have sleeves...and you won't go sleeveless. Don't pass it up—just add sleeves!

With basic sewing skills, and a little bit of knowledge about sleeves, it's easy to do. Follow these guidelines and you'll no longer have to pass up styles without sleeves.

Look at the shoulder of the garment that will be receiving the sleeve. Is it straight, like V8743? (1) Is it slightly extended or capped, like V8724? (2)

Look through your stash of patterns for a similar garment with a similar shoulder that has a sleeve. (If you are a person who only makes patterns with sleeves,



5A



5B

front

back

Keep in Mind:

Your sleeveless armhole will not have notches or circles to match to the sleeve. Don't put your sleeves in backwards! The single notch of the sleeve is for the bodice front, and the double notch is for the bodice back. You will have to use your judgment for sleeve cap ease.

When looking for a pattern match with sleeves, in addition to looking for a similar style shoulder, avoid pairing a design for Knit Only with one for woven fabrics as the ease will be very different. ∞

chances are you'll have a match in your collection.) For a straight shoulder, you could use a style like V8532 (3). For a slightly extended or capped shoulder, you could use a style like V8511 (4).

If you think you have a match, check the armhole of both patterns. They don't have to have the same exact shape, but the overall circumference should be close. Overlay the pattern pieces for a quick check. (5A & 5B). If they are close, go ahead and use the sleeve pattern from one for the other. If in doubt, make a test muslin. When we compared V8743 with V8724, the shape of the armhole (5A & 5B) was different enough that we made a muslin. The sleeve fit fine. (6)



6